

Reasoning the Lunar Month Start

© Copyright 2024 by Steven C. Buren hosting www.theorybin.com

Full Moon + 14days:18hours:22min = New Moon Junction

Or Full Moon +15 Days minus 5hrs:38min = Junction (conjunction)

29 days, 12 hours, 44 minutes, 2.8 seconds = $29.53056 / 2 = 14.76528$ Days

This always places Full Moon on 1st day of Passover & 1st day of Tabernacles

(Eclipse only on 1st or 15th Day)

- (Last day of Moon Seen leading the sun
- (* 1st day of Moon Dark – **Last Day of Yahshua's Lunar Month**
- (* 2nd day of Moon Dark – **Moon Centered** to sun – **1st Day of Yahshua's Month**
- (* 3rd day of Moon Dark
-) 1st day New **Moon Sighted** following sun - **1st Day Tradition & Pharisee Month**

An **offset of 2-Days** between (**Conjunction-Centered**) & Traditional (**First Sighting**) for Month Starts, Justify how Yahshua completed His Passover, Trial, & Death, **before** the Pharisee Priests started their Traditional **Day of Preparation before Passover**

--- Outline of Yahshua's Passover ---

Tuesday – Yahshua's **Day of Preparation** - **14th day** from moon centered, **12th day sighted**
On the 3rd day of teaching in Temple, John & Peter prepare Upper Room for Passover
(At sundown Tuesday starts the Night of Wednesday)

Wednesday – Yahshua's **1st Day of Passover** - **15th day** from centered, **13th day sighted**
Yahshua has His Passover with Disciples

Arrest & **Pharisee Trial** before morning – Peter hears Crowing before sun-up.

3 Trials that day by - Pilate - Herod – Pilate; Scourged, Crucified & Death before Sundown

The Sun Darkened at Noon 3 hrs that day, 1st day of Pesach, 15th day of Moon Junction

This was not an Eclipse of the Sun & Moon – not possible on a full moon

(At sundown Wednesday starts the Night of Thursday, the Burial)

Thursday – Yahshua's **2nd Day of Passover** - **16th day** from moon centered, **14th day sighted**
Pharisee's insist that crucified men be killed and taken down
Buried before Morning, so as not to defile their Day of Preparation
(1st Night & 1st Day of burial)

Friday – Yahshua's **3rd Day of Passover** - **17th day** from moon centered, **15th day sighted**
Pharisee & Jews begin Traditional Passover

Pharisee ask Pilate to **guard** the Tomb, Pilate tells them to **use their own** watchmen
(2nd Night & 2nd Day of burial) (Pharisee 1st day)

Saturday – Yahshua's **4th Day of Passover** - **18th day** from moon centered, **16th day sighted**
(3rd Night & 3rd Day of burial) (Pharisee 2nd day & 1st Omer)

(At sundown Saturday starts the Night of Sunday - arise)

Sunday – Yahshua's **5th Day of Passover** - **19th day** from moon centered, **17th day sighted**
Great earthquake opens tomb before morning, & Yahshua is seen by many that day
5th day of Yahshua's Pesach (Pharisee 3rd day & 2nd Omer)

- 3 days later -

Wednesday – **(8th Day is Yahshua's 1st Offering of the Omer)** (Pharisee 5th day & 4th Omer)
On 8th Day, Yahshuah ate with Apostles breaking bread, walked out with them & **was taken up.**

--- Outline of Yahshua's Passover to Omer ---

<p>Messiah ask Peter & John to Prepare upper Room for Passover</p> <p>Day of Preparation for Messiah 14th day from moon centered</p> <p align="right">centered 14 sighted 12</p> <p>Tuesday</p> <p>After sunset Night Before Sunrise Morning Day Sunset</p>	<p>Messiah Day-1 of Passover & Trial & Death on 15th day</p> <p>Eclipse of Sun Darkens Earth Eclipse not from Moon Not possible on Full Moon</p> <p>Pharisee bury their dead before morning</p> <p align="right">centered 15 sighted 13</p> <p>Wednesday</p> <p>After sunset Night Before Sunrise Morning Day Sunset</p>	<p>Messiah Burial & 1st night & day in tomb</p> <p>Pharisee Day of Preparation</p> <p>Messiah Pesach Day-2 Pharisee Pesach Prep Taken down wrapped & buried that night</p> <p align="right">centered 16 sighted 14</p> <p>Thursday</p> <p>After sunset Night Before Sunrise Morning Day Sunset</p>	<p>Messiah 2nd Night & day in tomb</p> <p>Pharisee Day-1 of Passover.</p> <p>Messiah Pesach Day-3 Pharisee Pesach Day-1</p> <p>Asked Pilot to set Guard. He said - Ye have guards, Set your own guard</p> <p align="right">centered 17 sighted 15</p> <p>Friday</p> <p>After sunset Night Before Sunrise Morning Day Sunset</p>
<p>Messiah 3rd Night & day in tomb</p> <p>Saturday - Pharisee day1 Omar offering count to Shavuot</p> <p>Messiah Pesach Day-4 Pharisee Pesach Day-2 Pharisee Omar-1</p> <p align="right">centered 18 sighted 16</p> <p>Saturday</p> <p>After sunset Night Before Sunrise Morning Day Sunset</p>	<p>Tomb is open & Messiah is seen by 2 on a road, he ate with them & vanished</p> <p>Messiah Pesach Day-5 Pharisee Pesach Day-3 Pharisee Omar-2</p> <p>Great Earthquake opens tomb before morning</p> <p align="right">centered 19 sighted 17</p> <p>Sunday</p> <p>After sunset Night Before Sunrise Morning Day Sunset</p>	<p>Ate with 11 & said go now to Gallilee, then wait in Jerusalem till things are fulfilled</p> <p>Messiah Pesach Day-6 Pharisee Pesach Day-4 Pharisee Omar-3</p> <p align="right">centered 20 sighted 18</p> <p>Monday</p> <p>After sunset Night Before Sunrise Morning Day Sunset</p>	<p>Gone Fishing</p> <p>Messiah 7th day of Passover Holy Sabbath day</p> <p>Messiah Pesach Day-7 Pharisee Pesach Day-5 Pharisee Omar-4</p> <p align="right">centered 21 sighted 19</p> <p>Tuesday</p> <p>After sunset Night Before Sunrise Morning Day Sunset</p>

<p>Messiah appeared to the eleven fishing He took them as far as to Bethany & lifted hands & ascended</p> <p>Offering of Omar Day-1 of Omar Pesach Day-8</p> <p>Pharisee Pesach Day-6 Pharisee Omar-5</p> <p align="right">centered 22 sighted 20</p> <p>Wednesday</p> <p>After sunset Night Before Sunrise Morning Day Sunset</p>

--- Determine the First Omer ---

Pharisee Traditions celebrate the first Sabbath (Saturday) during Passover as first Omer to renew eating of Leavened Bread.

Yahshua observed 1st day of the month at the moon center junction, and his 14th evening & 15th day was Passover on a full moon. He told his disciples to tarry in Jerusalem until the Holy Spirit Anoints them on 50th day Feast of Weeks. His wave offering and ascension was the First Fruits offering of the **Omer** on the **8th day** of Passover. **This timing always produces a full moon on 4th or 5th day of Savuot.**

--- Leviticus 23:6-16 Begins the Omer ---

15th Day is the feast of Unleavened Bread. 1st & 7th days are Holy. The morning after the 7th day bring first-fruits to priest, he shall wave the sheaf. Eat no bread or corn or green ear of first-fruit until you have brought that offering. In 50 days bring 2-leavened loaves to offer.

-- Some of the many Verses of Yahshua's Passover --

--- -- Matthew -- ---

Mat 27:62 Now the **next day, that followed the day of the preparation**, the chief priests and Pharisees came together unto Pilate, **(on Pharisee sabbath day of Passover)**

Mat 27:63 Saying, Sir, we remember that that deceiver said, while he was yet alive, After three days I will rise again.

Mat 27:65 **Pilate said** unto them, **Ye have a watch**: go your way, make it as sure as ye can.
(Commonly taught as Roman Guards & Roman Seal)

Mat 27:66 So **they went**, and made the sepulchre sure, **sealing the stone, and setting a watch**.
(The Pharisees set their own Guards & Seal)

--- -- Mark -- ---

Mar 15:42 And now **when the even was come**, because **it was the preparation**, that is, the **day before the sabbath**, **(that sabbath to come was the Pharisee passover)**
(Evening of the preparation was sunset following day of trial & death on his Passover)

Mar 15:43 Joseph of Arimathaea, an honourable counsellor, which also waited for the kingdom of God, came, and went in boldly unto Pilate, and craved the body of Jesus.

--- -- Luke -- ---

Luk 23:53 And he took it down, and **wrapped it in linen, and laid it in a sepulchre** that was hewn in stone, wherein never man before was laid. **(Burial before the daylight preparation day)**

Luk 23:54 And **that day was the preparation**, and the sabbath drew on. **(Burial before Pesach)**

--- -- John -- ---

Joh 19:31 The Jews therefore, **because it was the preparation**, that the **bodies should not remain upon the cross on the sabbath day**, (for that sabbath day was an high day,) besought Pilate that their legs might be broken, and that they might be taken away.

--- -- 1st Omer on 8th Day of Pesach taught in Luke -- ---

Luk 24:50 And **he led them out as far as to Bethany**, and he lifted up his hands, and blessed them. Luk 24:51 And it came to pass, **while he blessed them, he was parted from them, and carried up into heaven**. **(Yahshua's 8th day of Pesach & 1st Omer, Pharisee 5th day & 4th Omer)**

--- -- ---

Using Calculations of the following pages

Moon is exactly full at 8:29 a.m. EDT, Thursday, August 15, 2019

Full moon to Dark moon centered is 14 days:18 hrs:22 min (15 days minus 5hrs:38min)

Full moon to Junction = Lunar month start = **Aug 30, 2019 at 2:51am EDT**

Add 4 quarters of 29 days:12 hrs:44 min, OR (30 days minus 11hrs:16min)

Rosh Hashanah starts after 29 days:12 hrs:44 min = Saturday Sept 28, 2019; 3:33pm EDT

Note: Israel is 9hrs ahead & thus after midnight their Sunday of Sept 29; 12:33am Israel

(Two different days; two different hours; at the same Lunar instant)

- (Last day of Moon Seen leading the sun
- (* 1st day of Moon Dark – **Last Day of Yahshua's Lunar Month**
- (* 2nd day of Moon Dark – Moon **Centered** to sun – **1st Day of Yahshua's Month**
- (* 3rd day of Moon Dark
-) 1st day New Moon Sighted following sun - 1st Day **Tradition & Pharisee Month**
- (Eclipse will only occur on align of sun, moon & earth on 1st or 15th Day of Lunar Month)**

Note: Pharisee Tradition & Islam start Month on New Moon Sighting – 2 Days Late

Full Moon + 14days:18hours:22min = New Moon Junction
Or Full Moon +15 Days minus 5hrs:38min = Junction

This always places Full Moon on 1st day of Passover & 1st day of Tabernacles
(A Full moon may cover 2 days if time of alignment is near sunset)

29 days, 12 hours, 44 minutes, 2.8 seconds = 29.53056 / 2 = **14.76528 Days**
Moon Angle changes 12.190761 degrees per day, or **1 hr, 14 min per day**

-- Sight the Moon & Calculate the Coming Month --

If your calculation places the Junction time after sunset, it is defined as the next day.

A Full Moon rises at sunset, or sets at sunrise within 74 min (180` offset)

If Full moon is determined greater than **37 minute offset**, New Moon will span 2 days



1st day of month on Conjunction Moon, aligned to sun -not seen except sun eclipse
Add 29 days:12 hrs:44 min to the next New Moon (30 days minus 11hrs:16min)



1st quarter – Due to an Elliptical Orbit, a half moon will vary in time
Add generally 22 days: & 3 hrs to the next New Moon junction



Deduce precise time of Full moon – rises or sets within **37 minutes** opposite of Sun
Add 14 days:18 hrs:22 min to the next New Moon (15 days minus 5hrs:38min)



3rd quarter – Due to an Elliptical Orbit, a half moon will vary in time
Add generally 7 days & 9 hrs to the next New Moon junction



New Moon Junction starts **First Day of the Month**, aligned to the sun & not seen except when the sun is eclipsed

Observe the Moon & Stars for accuracy of a proper announcement. Obscuring by clouds, a lapse in observation, or a dispute of location, will not interfere with a precise prediction.

-- Sight the Stars to Recognize the Month --

These observances are made without equipment, and few skills are needed by those who live under the stars. The accounting is done to identify the **1st, 7th, & 8th months**, by watching **three star patterns in the sky, & Josephus observes a fourth.**

The books of **Job 9:9, 38:31, & Amos 5:8** recognize the importance of three stars that have names of **Arcturus, Orion, and Pleiades**. These bright points of light identify two feasts when they **rise in the east, as the sky darkens** at sunset. This method places the star and pattern overhead at the midpoint of the night, and **setting in the west as sunrise lightens** the sky.
Josephus Antiquities 3.10.1 **Aries is in the sun** for the month of Nisan.

One month before the Feast. The alignment star is seen at Midpoint-of-the-Night at a 1-o'clock position from the perspective of the North Star.

Stars pass over earth slightly faster than sun, as they rise & set 4-min earlier each night.

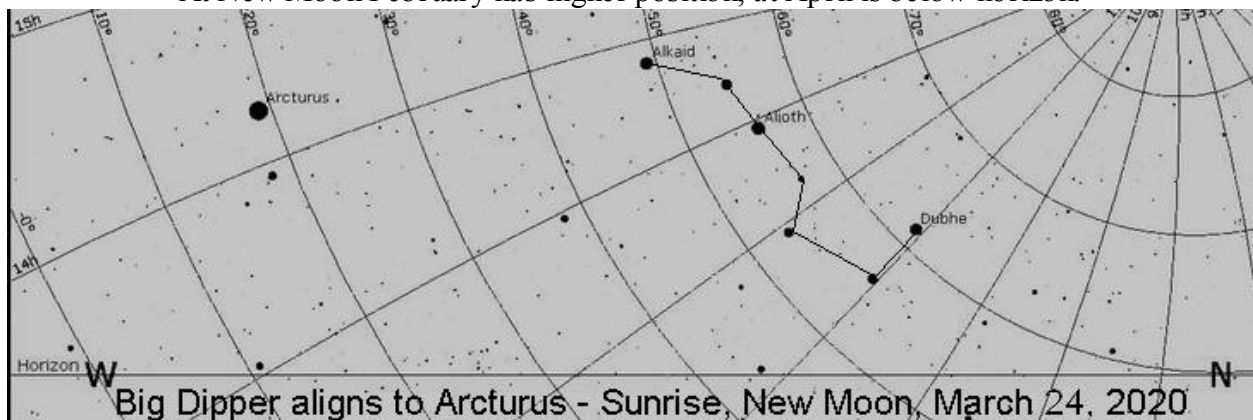
Only when rising just as the sunsets and set before sunrise, is the month in effect.

Observation of Arcturus for Nisan 1st Month

The **Double star of Arcturus** is recognized by the Big Dipper alignment for the **First Month** of **Nisan**, around our calendar Mar-Apr, & the 14th Lunar Day will be after the Equinox.

Sunrise about 6am, Arcturus is near West horizon on the New Moon of March 24, 2020.

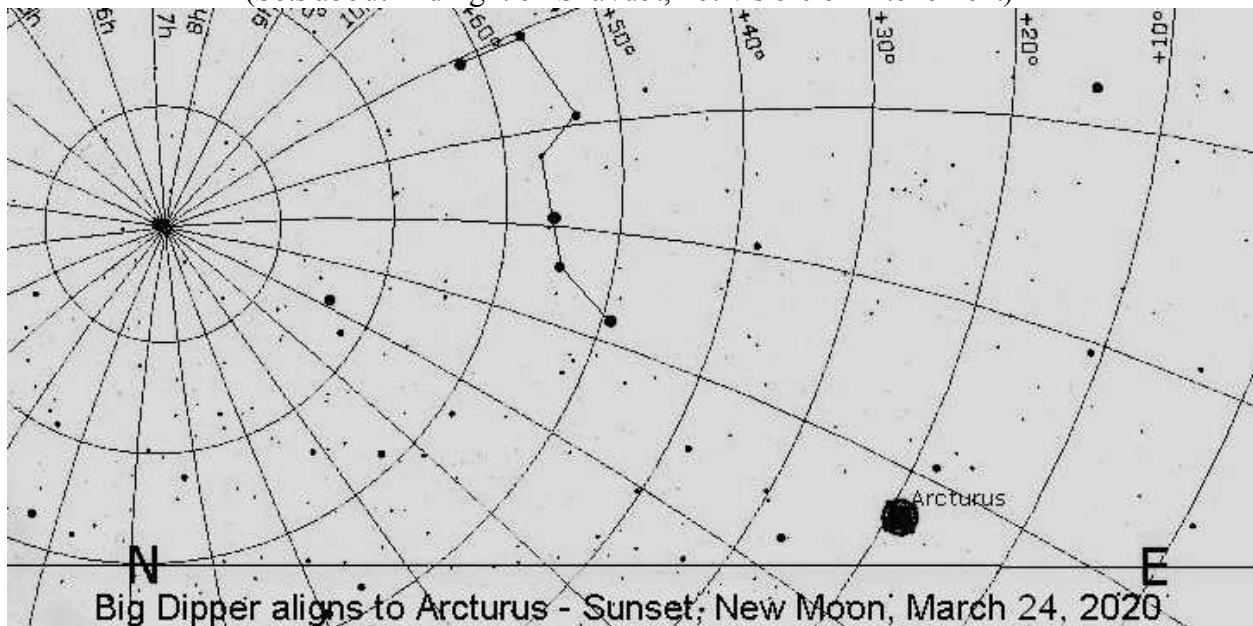
At New Moon February has higher position, at April is below horizon.



Big Dipper aligns to Arcturus - Sunrise, New Moon, March 24, 2020

(Rises in East at sunset & Sets in West at sunrise on **Passover** N-19.04 degrees)

(Sets about midnight on Shavuot, not visible on Atonement)



Big Dipper aligns to Arcturus - Sunset, New Moon, March 24, 2020

Sunset about 6pm, Arcturus is near East horizon at on the New Moon of March 24, 2020.

At New Moon February is below horizon, at April has higher position.

--- -- Job was written before the appointed feasts --- --

Job 9:9 Which make **Arcturus**, **Orion**, and **Pleiades**, and the chambers of the south.

Job 38:31 Can thou bind the sweet influences of **Pleiades**, or loose the bands of **Orion**?

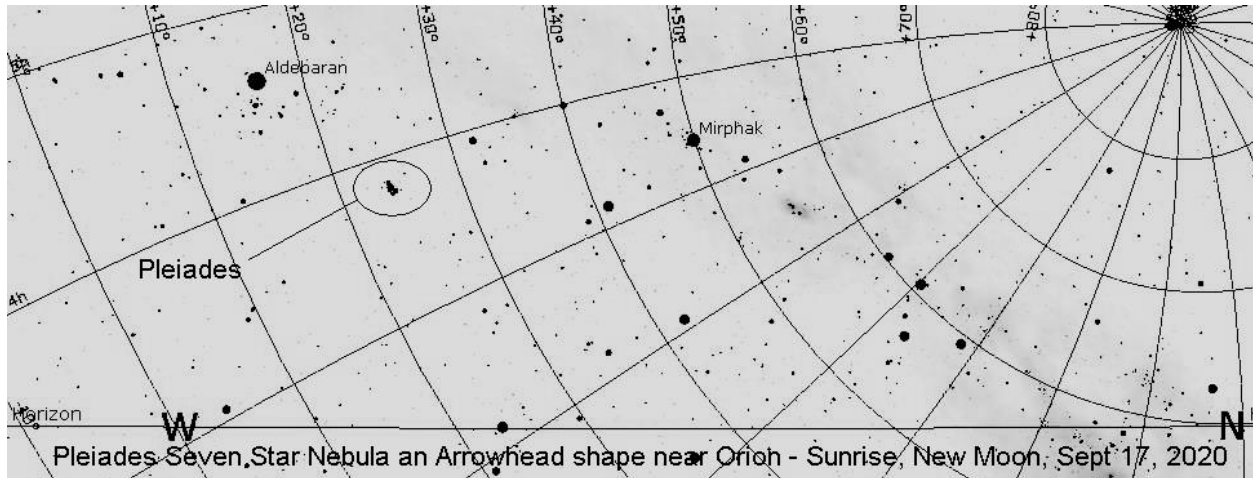
Amos 5:8 Seek him that made the **seven stars** (Pleiades) and **Orion**, and turns the shadow of death into the morning, and makes the day dark with night: that calls for the waters of the sea, and pours them out upon the face of the earth: **Yahweh** is his name:

Antiquities 3.10.5 When the **sun is in Aries** (by 7th month stars of Pleiades) is the month of Nisan that we were delivered from bondage under the Egyptians. (**Passover**)

Note that Hebrews use the visible stars, Pharisees use the stars blotted by the sun.

Note: The Star & Lunar clocks get out of align – & reset with Leap Years adding one month

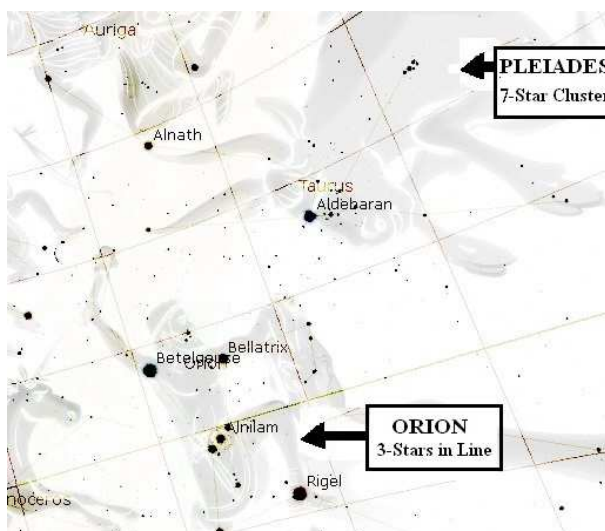
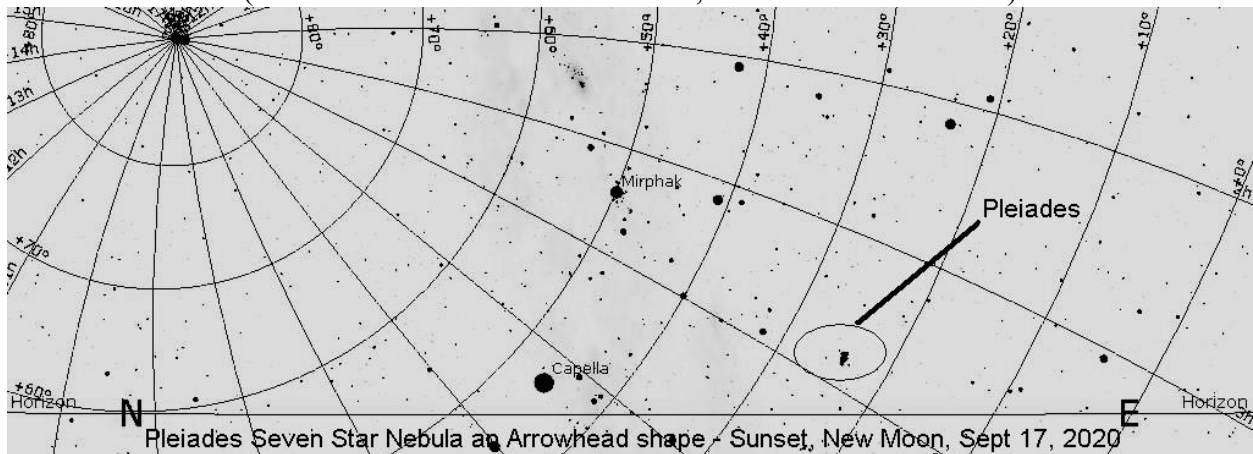
Observation of Pleiades for Tishri 7th Month



The 7-star Nebula cluster of **Pleiades**, beside **Orion**, identifies the 7th Hebrew Month, to our calendar 9th & 10th months of September and October.

(Directly between North Star & due South on 7th month of Atonement & Tabernacles)

(Sets 2-hrs after sunset on Passover, Not visible on Shavuot)



The stars of **Orion** set the **Eighth** Hebrew Month, to our calendar 10th & 11th months of October & November. Direct between North Star & due South on 8th month

(Rises & Sets 2-3 hrs after Pleiades)

(Sets 3-hrs after sunset on Passover, Not visible on Shavuot)

Rises in East sunset, Sets in West sunrise on **8th Month** (Amos 5:8, 18-20)

Copyright © 2020 by Steven C. Buren. All rights reserved on www.theorybin.com and the book "Revealing Bible Mysteries."

This text may be duplicated for classrooms and public speaking, provided theorybin.com origin is stated

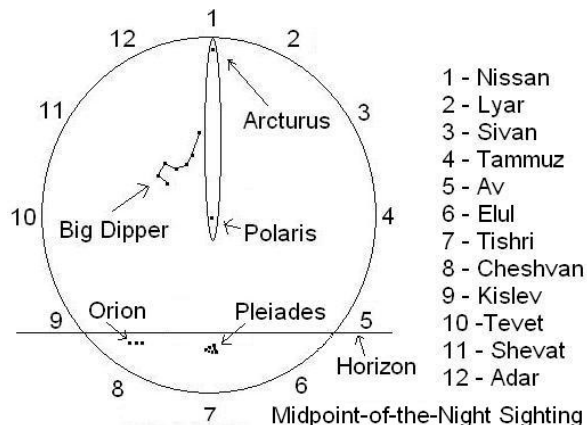
-- -- Identify 1st & 7th Month -- --

Tradition searches for Sprouts (Exodus 9:31 Barley was in the Ear & Fax in the Boll)

Celestial time & deciphering stars to tell seasons

Those in the northern hemisphere know the front end of the Big Dipper points to the North Star **Polaris**, that never moves position.

The Handle of that Big Dipper, if you extend double the length, points to the bright double star **Arcturus**.



Use **Polaris** aligned to **Arcturus** as a **clock hand** to tell the celestial time of the seasons

There are two hours of earth movement for every hour position of the clock hand.

Sightings are determined at Midpoint-of-night,

Each 2-hr offset from Midpoint-of-night moves one celestial clock-hand-hour.

(2 hr before mid is 1-o'clock position)

Rotate Entire clock to position Arcturus at Midpoint-of-the-night, the Top Number is the Month (Job 9:9, 39:31, Amos 5:6, Antiquities 3.10.1)

Double star **Arcturus** rises at sunset & sets at sunrise on **1st Lunar Month**.

If Arcturus is **12-o'clock** position at Midpoint-of-the-night, then it is **1st month** of Nisan, the month of Passover. Will be direct between Polaris & due South.

If Arcturus is **1-o'clock** position at Midpoint-of-the-night, then it is **12th month** of Adar, one month before first month Nisan.

If Arcturus is **6-o'clock** position at Midpoint-of-the-night, then it is **7th month**, but below the horizon, & Dipper points Down. Will not be seen.

7-star cluster of **Pleiades** – shape of an arrowhead

The 7-stars of **Pleiades** will rise at sunset & set at sunrise on the **7th Lunar Month** (September - October). Will be direct between Polaris & due South.

If Pleiades is at **12-o'clock** position at Midpoint-of-the-night, then it is **7th month** of Atonement & Tabernacles. Direct between Polaris & due South.

The 3-stars in **Orion's Belt** will rise at sunset & set at sunrise on the **8th Lunar Month** (October-November)

If Orion is at **12-o'clock** position at Midpoint-of-the-night, then it is **8th month**, five months before Passover. Direct between Polaris & due South

This 3-point arrangement can easily deduce a chart of seasons & adjust months to sighting periods of the Moon.

Copyright © 2024 by Steven C. Buren. www.theorybin.com

Text may be duplicated for classrooms and public speech, if **theorybin.com** origin is stated

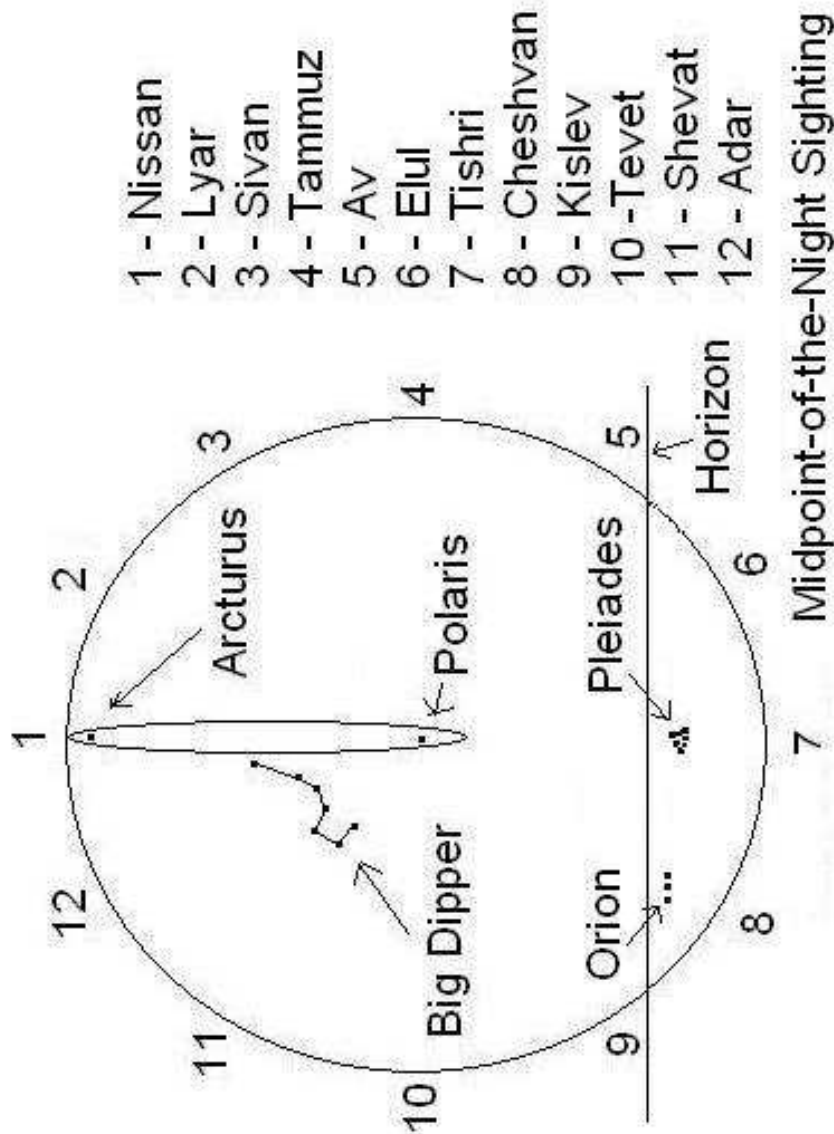
(Job 9:9, 38:31, Amos 5:6, Antiquities 3.10.1)

Use Polaris North Star aligned to Arcturus as a clock hand

Direct between Polaris & due South

Rotate Entire clock to the position of Arcturus at the Midpoint-of-the-night, the Top Number is the Month

Midpoint of Sundown to Sunrise, is Midpoint of Night



There are 2-hours of earth movement for every 1-hour position of the clock hand.

Sightings determine the Midpoint-of-night position

Move 1-clock-hand-hour for each 2-hr from mid-of-night observation.

(2 hr before mid is 1-oclock position) (4 hr before mid is 2-oclock position)

Copyright © 2024 by Steven C. Buren. www.theorybin.com

Text may be duplicated for classrooms and public speech, if theorybin.com origin is stated